



Search



Sign Up for Newsletters

Buy Tickets Autos More

LOGIN REGISTER

- Home
- News
- Sports
- Health
- Top Spots
- Events
- Heard On
- Traffic
- Weather
- Places
- Travel
- Deals
- Your Home
- Circulars
- Autos
- Latest
- Local
- Politics
- Crime
- Business
- Health
- Entertainment
- Consumer
- US News
- World News
- Galleries

ASK RIC EDELMAN
twice named #1 independent advisor in the nation* [*Details]

GET A FREE PORTFOLIO REVIEW

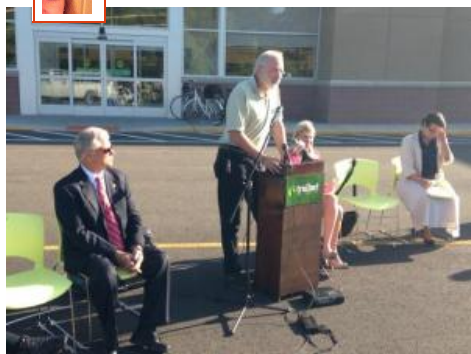
EDELMAN
FINANCIAL SERVICES

LOCAL

Leaders From Maplewood, Trailnet Make One Last Plea Opposing Connector

July 16, 2013 3:48 PM

Switch 5 3 View Comments



Opponents of the South County Connector stated their case Tuesday in front of the Deer Creek Shopping Center. (KMOX/Brett Blume)

ST. LOUIS, Mo. (KMOX) – “Ludicrous and insane,” that’s what some opponents are saying about the proposal to build a so-called South County Connector.

Their [campaign](#) against the four-lane, divided roadway continued Tuesday morning at the Deer Creek Shopping Center, which would be impacted by the new road.

[RAW: Read Trailnet’s Issues With Proposal >>](#)

Among those who spoke was St. Louis County Councilman Pat Dolan, whose 5th District would be home to the Connector.

He told the group that as a resident and taxpayer of Maplewood he is concerned about how the proposed plan would impact his city. “I don’t want to see all this beautiful area that Maplewood took the time and money and effort to put together to just be taken away.”

In June, Maplewood’s City Council and Great Rivers Greenway [officially came out](#) against the proposal.

Related Articles:

- [City Residents, Aldermen Gather To Criticize South County Connector](#)
- [Communities Concerned, Criticize Proposed South County Connector](#)

Besides the noise the roadway would bring, and the immediate threat of several businesses needing to be removed, Maplewood Councilman

Filed Under
[Local News](#), [News](#), [Syndicated Local](#)

Related Tags
[Ann Mack](#), [Barry Greenberg](#), [Maplewood](#), [Pat Dolan](#), [South County Connector](#), [St. Louis County](#), [Trailnet](#)

www.Math MovesU.com

Where Math Meets Fun!

click to play fun math games with your kids

presented by **Raytheon**

Today's Circulars



Why Wait? Get Technology You Need Today at Dell

[Get Summer Decor for Less from Family Dollar](#)

[All Women's Dresses on Sale at Target](#)

Barry Greenberg says the biggest problem with the Connector is that it simply isn't needed.

"It will cause traffic to bypass our city," he said. "We have a decreased population in the study area, and the addition of MetroLink, Trailway and Greenway system provide more sustainable alternatives to [automobile](#) commuting."

His statement was echoed by Trailnet's Jennifer Allen who told KMOX that this priority of the county doesn't mesh with major initiatives in other municipalities. "There are other cities, other groups that have voiced that same exact concern. There are things that have not been explored to the extent necessary."

Tuesday morning Trailnet [CEO](#) Ann Mack continued to be extremely

"Are they not paying attention in the County Executive's office?" she asked. "To put a forty mile-an-hour road that cuts through all this. That's not a connector, that is a disconnecter and it will destroy!"

Four-hundred letters have already been delivered and hundreds more are to be dropped off with St. Louis County Executive Charlie Dooley today, in opposition to the proposed South County Connector roadway.

Opponents have until close-of-business this Friday to comment on the Draft [Environmental](#) Impact Study for the Connector.

Sponsored Links

4 Hormones Making Us Fat?
Learn how to control 4 hormones all skinny people have in balance.
[RealDose.com](#)

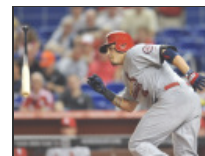
New Rule in Missouri (July 2013): If You Pay For Car Insurance You Better Read This Now...
[ConsumerSpending.org](#)

"Tanning That Looks Real"
Self Tanning Results That Amaze You. No Smell, No Streaks, No Orange!
[TanPhysics.com](#)

[Buy a link here](#)

Get the Best in Brand Names at The Sports Authority

LATEST GALLERIES



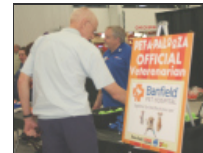
Baseball Shots Of The Week -...



New Photos Of Old St. Louis



Must-Have School Supplies



Pet-A-Palooza 2013

TWITTER UPDATES

- RT @Brpkelly: Milestone for new bridge, the latest on Matt Mitchell hearing and #Centene reports earnings. Coming up at <http://t.co/OLKLK10...> 1 hour ago
- Check out @chrabe's latest column: The Double-Standard Of Drugs In Sports >> cbsloc.al/12fmP71 1 hour ago
- Drua-Dealina Mo. Sheriff Faces Arson, Burglary
- Heroin Abuse Group Focuses on Doctors, Junior High cbsloc.al/131CAWS 4 hours ago

Louis Buy Tickets Autos More FOLLOW US LOGIN REGISTER

Follow CBS St. Louis

Follow @kmoxnews 17K followers



Follow More Stations and Personalities

Face Lift Without Painful Surgery [Skincaresearch.com](#)

3 Reasons Not to Use Online Bank Accounts [About.com](#)

Free Laser Hair Removal!

Trick Lets You Collect Silver From Any Bank

Switch

5

3

View Comments

FROM AROUND THE WEB

13 Things Your Pizza Guy Won't Tell You (Reader's Digest)

No Support: 8 Celebrities Who Agree With

WE RECOMMEND

Real Estate Mogul Killed in Home Near Town & Country, Wife Charged

[The Zimmerman Verdict](#) (Bossip)

[13 Things a Movie Theater Employee Won't Tell You](#) (Reader's Digest)

[4 Surgeries to Avoid](#) (AARP.org)

[Treasure Trove of Classic Chevys Discovered](#) (Bloomberg)

[Missing Casino Royal Actor Paul Bhattacharjee Found Dead](#) (E! Online)

[Deadly Crash on I-70 Started With Gun Battle](#)

[Mehlville Superintendent Stunned By Amount of Student Transfer Applications](#)

[Police: Beer Spilled, Argument, Man Killed](#)

[St. Louis Man Sentenced for Role in Cocaine Ring](#)

[One Dead After Float Trip Fight](#)

Recommended by

0 comments



Leave a message...

Newest Community

Share Settings

No one has commented yet.

Comment feed Subscribe via email



Back To School Ideas



Tailgate Fan



Get The App



Top Exhibits To Visit This Summer





OTHER CBS LOCAL CITIES



©2013 CBS Local Media, a division of CBS Radio Inc. All rights reserved.

News [Local](#) [Politics](#) [Crime](#) [Business](#) [Health](#) [Entertainment](#) [Consumer](#) [US News](#)
[World News](#)

Sports [Cardinals](#) [Blues](#) [Rams](#) [Mizzou](#) [Illinois](#)

Other [Heard On](#) [Traffic](#) [Contests & Promotions](#) [Photo Galleries](#) [Whole 'nother Story](#)

Top Spots [Arts & Culture](#) [Shopping & Style](#) [Food & Drink](#) [Nightlife & Music](#) [Family & Pets](#) [Travel](#)

Contact Us [NewsRadio 1120 KMOX](#)

[St. Louis Business Listings](#) [Restaurants](#) [Bars & Clubs](#) [Shopping](#) [Professional Services](#)

SEARCH LISTINGS

[Privacy Policy](#) | [Ad Choices](#) | [Terms of Use](#) | [EEO Report](#) | [Deals](#)
Powered by [WordPress.com](#) VIP